

2012 Mine Reclamation Awards

Presented by

The British Columbia Technical and
Research Committee on Reclamation



37th Annual Awards Presentation
September 18th, 2013 – Vancouver, BC



2011 B.C. JAKE MCDONALD MINE RECLAMATION AWARD

Keeper Trophy Presentation

Mount Washington



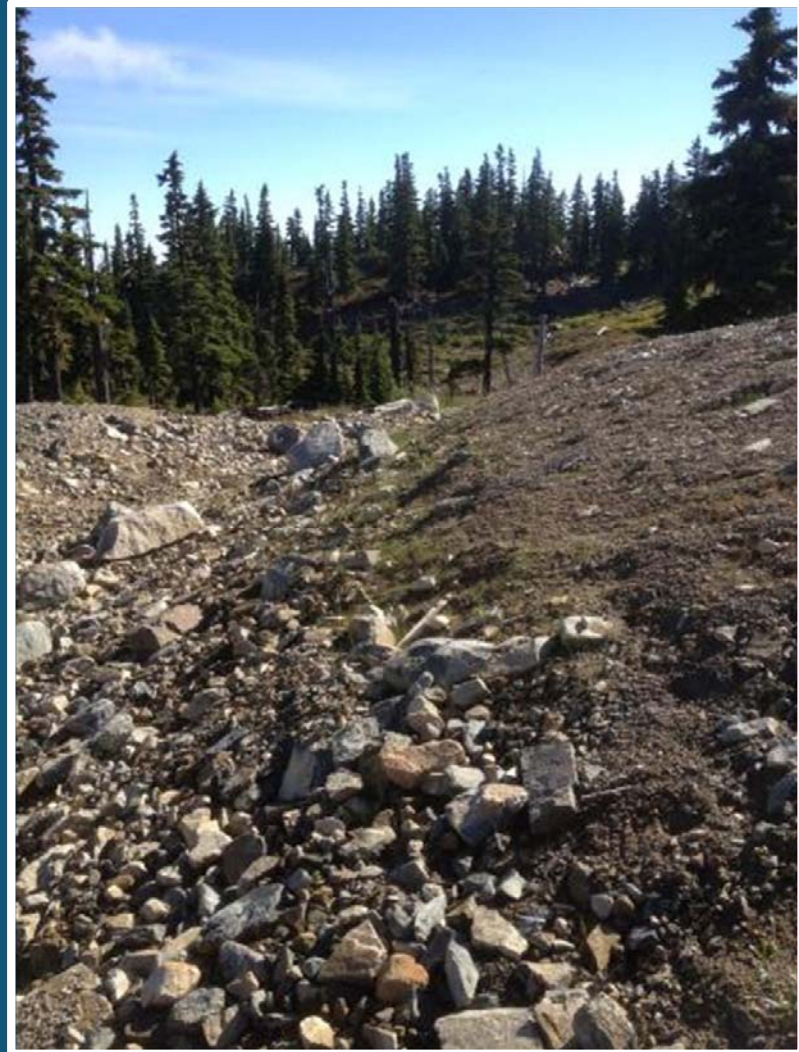
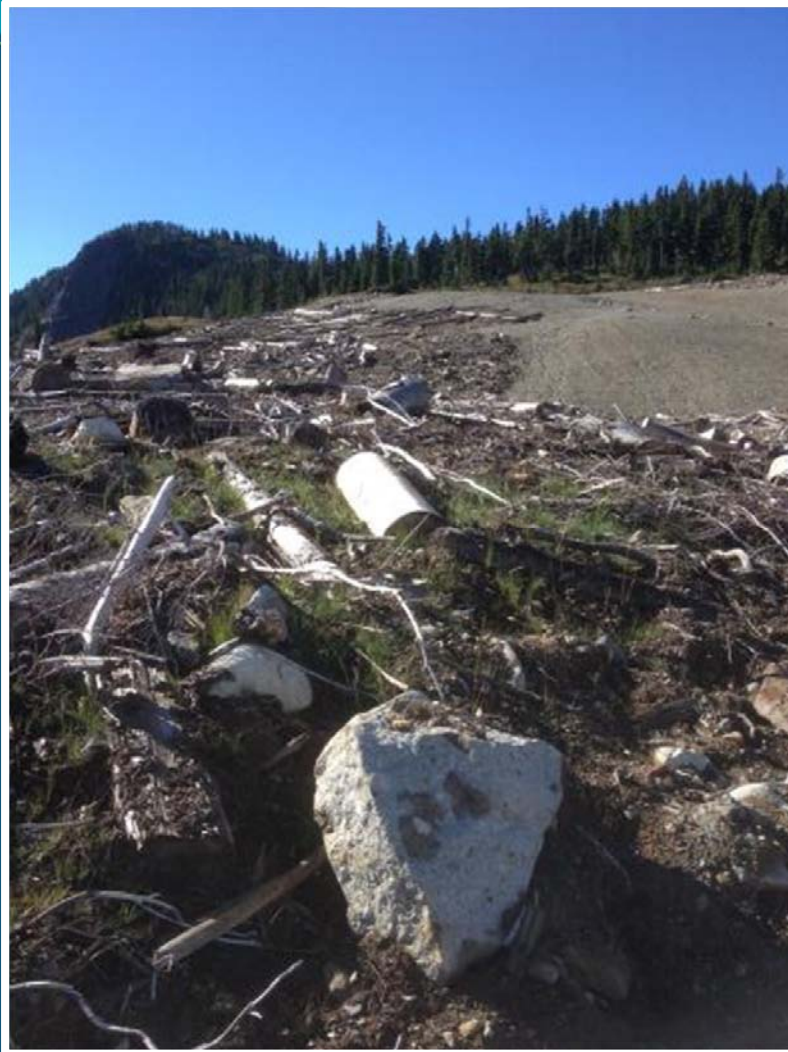
Underdrain Construction

Mount Washington



Over 12 km of bituminous liner installed, seams sealed by hand

Mount Washington



Vegetation beginning to establish (photo September, 2012)

2012 ANNUAL RECLAMATION AWARDS



2012 METAL MINING AWARD

Ministry of Forests, Lands and Natural Resource
Operations, and AECOM Canada Ltd.
for
Atlin Ruffner Mill and Tailings



Atlin Ruffner Mill and Tailings



Mill building, trailers and mill pads prior to reclamation (2008).

Atlin Ruffner Mill and Tailings



Mill building prior to reclamation (2012).



Remaining milling equipment, prior to reclamation (2008).

Atlin Ruffner Mill and Tailings



Sedimentation pond prior to drainage diversion (2012).



Atlin Ruffner Mill and Tailings



Tailing pond prior to reclamation (2012).

Atlin Ruffner Mill and Tailings



Tailing pond area after reclamation (2012; photo by Tervita).

Atlin Ruffner Mill and Tailings



Remediation in progress at the former mill site (September 2012).

Atlin Ruffner Mill and Tailings



Post-remediation, former mill area and access road in the foreground. Monitoring and revegetation is ongoing (June 2013)

Atlin Ruffner Mill and Tailings



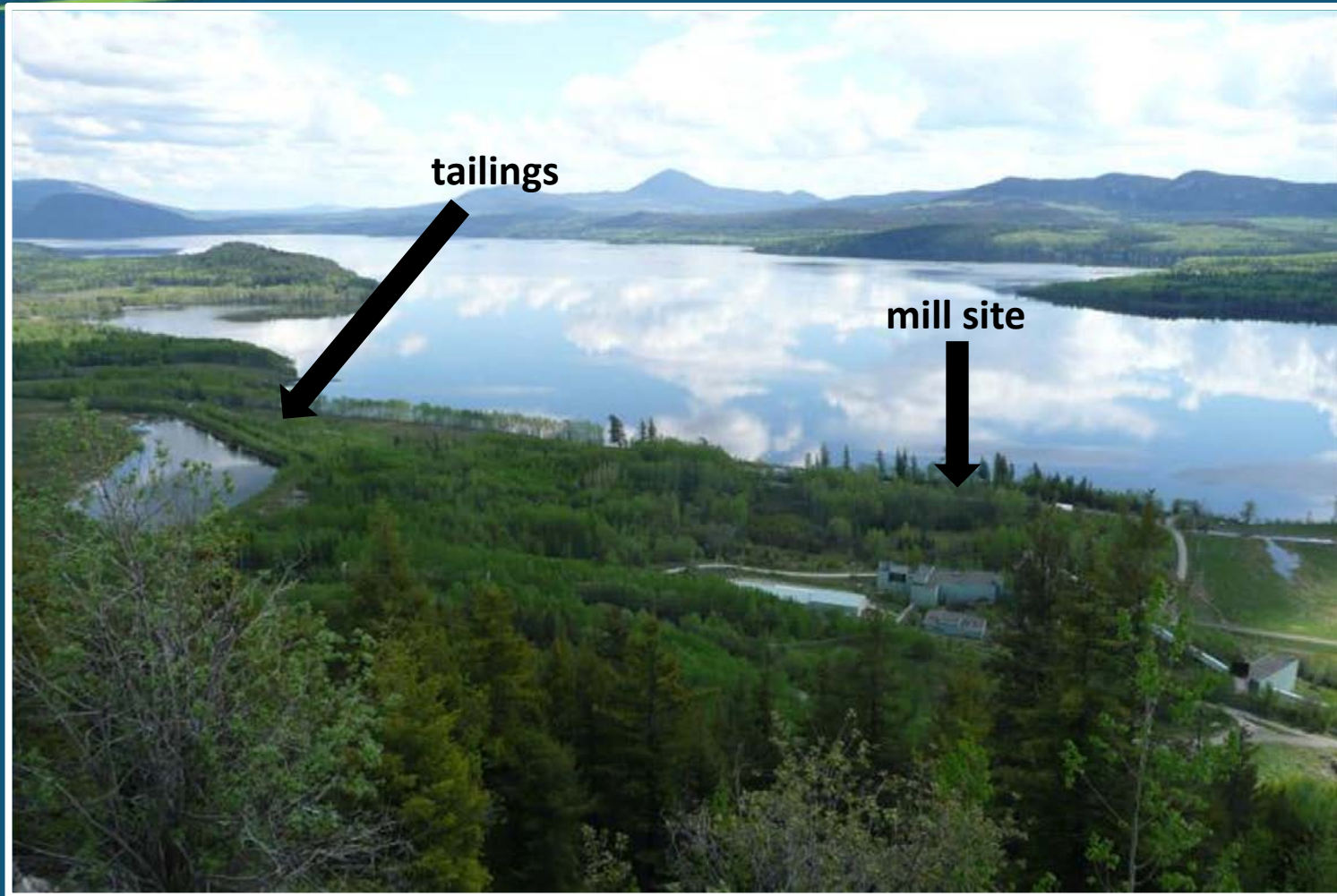
Post-remediation site overview; monitoring and revegetation ongoing (

2012 JAKE MCDONALD ANNUAL RECLAMATION AWARD

Teck Metals Ltd.
for Pinchi Mine



Pinchi Mine



Overview of mill site and tailings impoundment, pre-reclamation.

Pinchi Mine



Overview of mill site and tailings impoundment, post-reclamation (2013).

Pinchi Mine



Mill site prior to reclamation.

Rip rap protecting calcine waste (2013).



Reclamation of calcine waste dump and lagoons (2013).

Pinchi Mine



Biopsy of large trout at Pinchi Lake.

Pinchi Mine



Reclaimed 400 dump (2013)

Pinchi Mine



Reclaimed mill site (2013).

West Zone pit before backfilling (left/top) and after backfilling (right/bottom).



Pinchi Mine



750 portal closure (left) and 750 portal drainage monitoring (right).

Pinchi Mine



Workers preparing roaster soot and brick work for offsite disposal.



Tailings impoundment before reclamation.



Active tailings impoundment spillway.

Pinchi Mine



Tailings revegetated to eliminate aquatic habitat and possible exposure pathway (2013).

Pinchi Mine



Reclaimed main zone pit area (2013).