

# 2011 Mine Reclamation Awards

Presented by

The British Columbia Technical and  
Research Committee on Reclamation



36<sup>th</sup> Annual Awards Presentation  
September 20<sup>th</sup>, 2012 – Kamloops, BC



# **2010 B.C. JAKE MCDONALD MINE RECLAMATION AWARD**

**Keeper Trophy Presentation**



# Kemess South Mine



Final dam surface, August 2009



# Kemess South Mine



Kemess willow at Woodmere Nursery



Growth trial plots (2010)



# Kemess South Mine



Local First Nations representatives broadcast seeding the waste rock dumps



# Kemess South Mine



Mill Creek Access Road Reclamation (work completed 2005,  
photo taken 2009)



# **2010 B.C. JAKE MCDONALD MINE RECLAMATION AWARD**

**Northgate Minerals Corporation  
for Kemess South Mine**

# 2011 ANNUAL RECLAMATION AWARDS





# 2011 PLACER AWARD



# 2011 PLACER AWARD

Eli Christiansen  
for the Douglas Property



# Douglas Property



Douglas Property - before reclamation efforts

# Douglas Property



Douglas Property - before reclamation efforts

# Douglas Property



Douglas Property showing regrowth of native species, including alder and fireweed.

# 2011 PLACER AWARD

Eli Christiansen  
for the Douglas Property



# 2011 SAND AND GRAVEL AWARD



**BC TRCR**  
TECHNICAL AND RESEARCH  
COMMITTEE ON RECLAMATION

# 2011 SAND AND GRAVEL AWARD

R.E. Postill and Sons Ltd.  
and the Coldstream Ranch Ltd.  
for Rosebush Pit





# Rosebush Pit Area

PREPARED FOR: Coldstream Ranch (2002) Ltd.

MAP 1: TOTAL RECLAMATION  
AS OF JUNE 28, 2012

PROJECT NO: 2008-4120-006 PROJECT: Rosebush Pit  
Gravel Extraction  
& Reclamation

FILE: 2008\_4120\_006.dwg

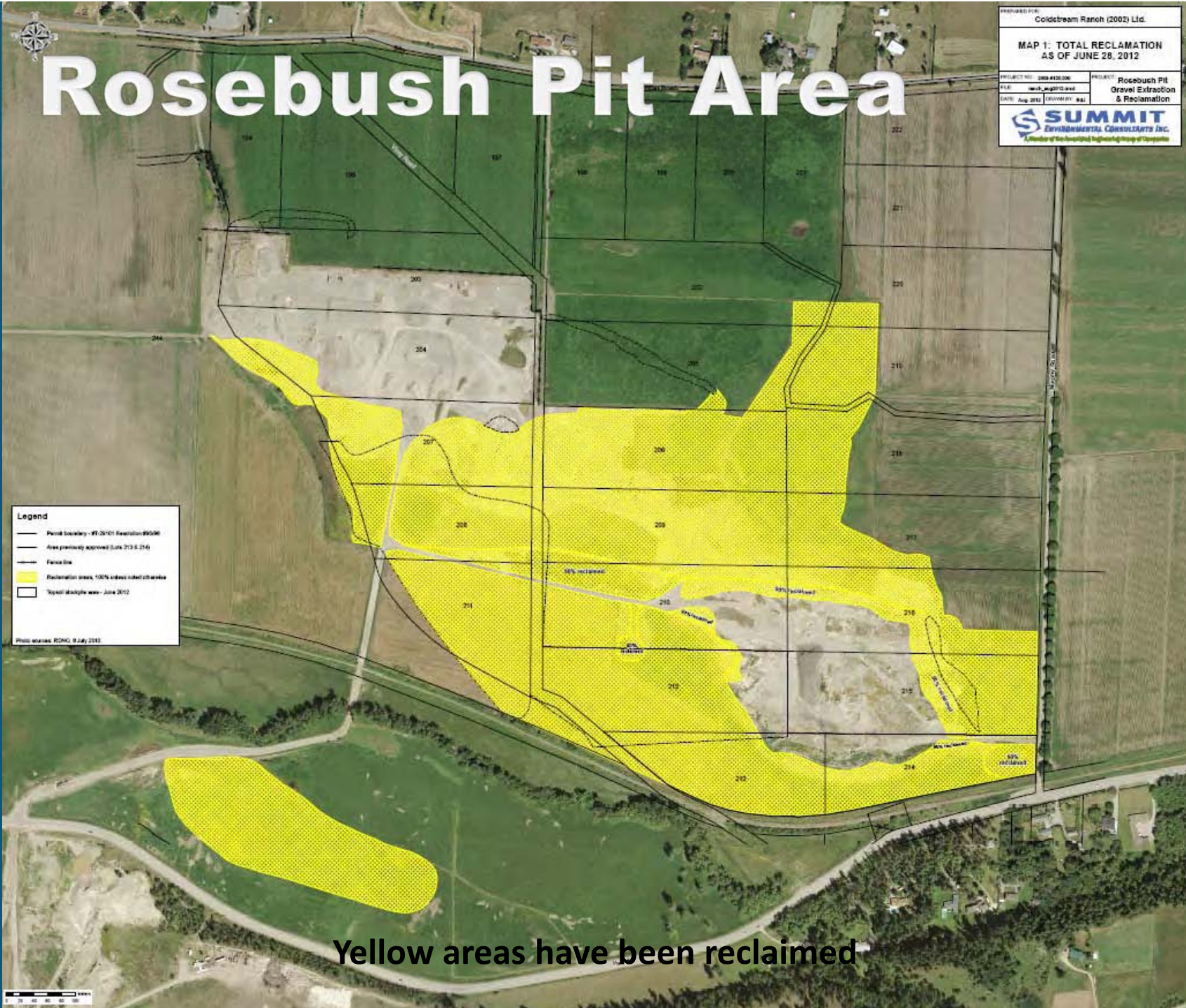
DATE: Aug 2012 DRAWN BY: BAJ

**SUMMIT**  
ENVIRONMENTAL CONSULTANTS INC.  
A Member of the International Engineering Group of Companies

**Legend**

- Parcel boundary - #T-20101 Reclamation #0596
- Area previously approved (Data 213 & 214)
- Fence line
- Reclamation areas, 100% unless noted otherwise
- Topsoil stockpile area - June 2012

Photo sources: RDMC, 8 July 2010



Yellow areas have been reclaimed

# Rosebush Pit



Crop growth beside a newly reclaimed area

# Rosebush Pit



Crops growing on reclaimed areas

# 2011 SAND AND GRAVEL AWARD

R.E. Postill and Sons Ltd.  
and the Coldstream Ranch Ltd.  
for Rosebush Pit



# 2011 INDUSTRIAL MINERAL AWARD



# 2011 INDUSTRIAL MINERAL AWARD

Quinto Technologies Inc.  
for Lumby Mine



# Lumby Mine



Core Shack Area before cleanup (2010) and after cleanup, regrading, and seeding (2011).

# Lumby Mine



Removing trailers - before and after  
(2011).





# Lumby Mine



Contaminated materials sorted and removed by HAZCO.

# Lumby Mine



**Northern and Middle tailings ponds  
before and after reclamation.**



# 2011 INDUSTRIAL MINERAL AWARD

Quinto Technologies Inc.  
for Lumby Mine



# 2011 METAL MINING AWARD



# 2011 METAL MINING AWARD

Gibraltar Mines Ltd.  
for Gibraltar Mine



# Gibraltar Mine



Main Sand Dam, with placement of wood chips (left), and pine tree establishment trial (2011).

# Gibraltar Mine



Main Sand Dam, before and after overburden placement, Fall 2011 (left) and Main Sand Dam Summer 2012 (right).

# Gibraltar Mine



**Trial Wetland Construction, Fall 2011 to Summer 2012.**





# Gibraltar Mine



Seedlings prepared in on site nursery compound (top) and reclamation crew taking vegetation for metal analysis (right).

# 2011 METAL MINING AWARD

Gibraltar Mines Ltd.  
for Gibraltar Mine



# 2011 JAKE MCDONALD ANNUAL RECLAMATION AWARD



# 2011 JAKE MCDONALD ANNUAL RECLAMATION AWARD

Tsolum River Partnership  
for Mount Washington Mine



# Mount Washington

## PARTNERS

- Jack Minard, Tsolum River Partnership Society
- Margaret Wright, Fisheries and Oceans Canada
- D. Lindsay & Domenico Iannidnardo, Timber West
- Diane Ramage and Jim Shinkewski, Pacific Salmon Foundation
- Peter Healey, SKR
- Diane Howe and Ron Bronstein, MEM
- Brenda Dixon, NRCan
- Ben Chalmers, Mining Association of BC (now MAC)
- Sharlene Henderson, Breakwater Resources
- Rob McCandless, Environment Canada (retired)
- John Deniseger, Ministry of Environment

# Mount Washington



# Mount Washington



A layer of soil and clay is placed to prepare the site for a permanent impermeable cover

# Mount Washington



Underdrain Construction



# Mount Washington



Over 12 km of bituminous liner installed, seams sealed by hand

# Mount Washington



Glacial till is spread to protect the membrane

# Mount Washington



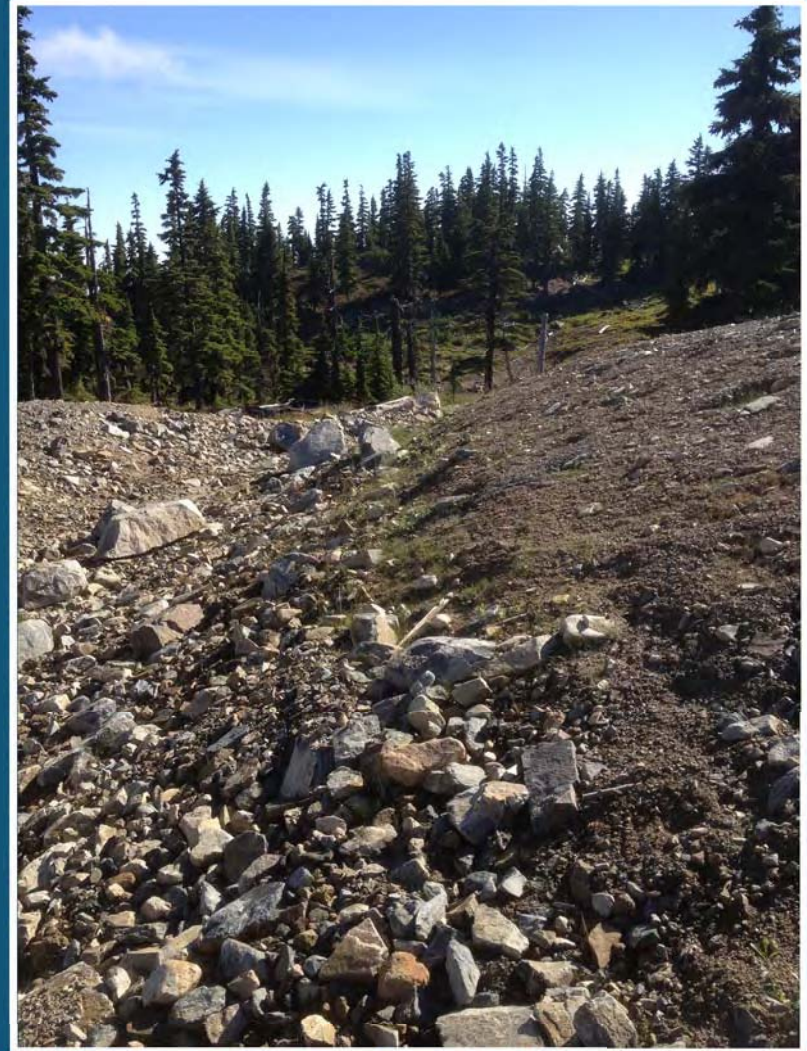
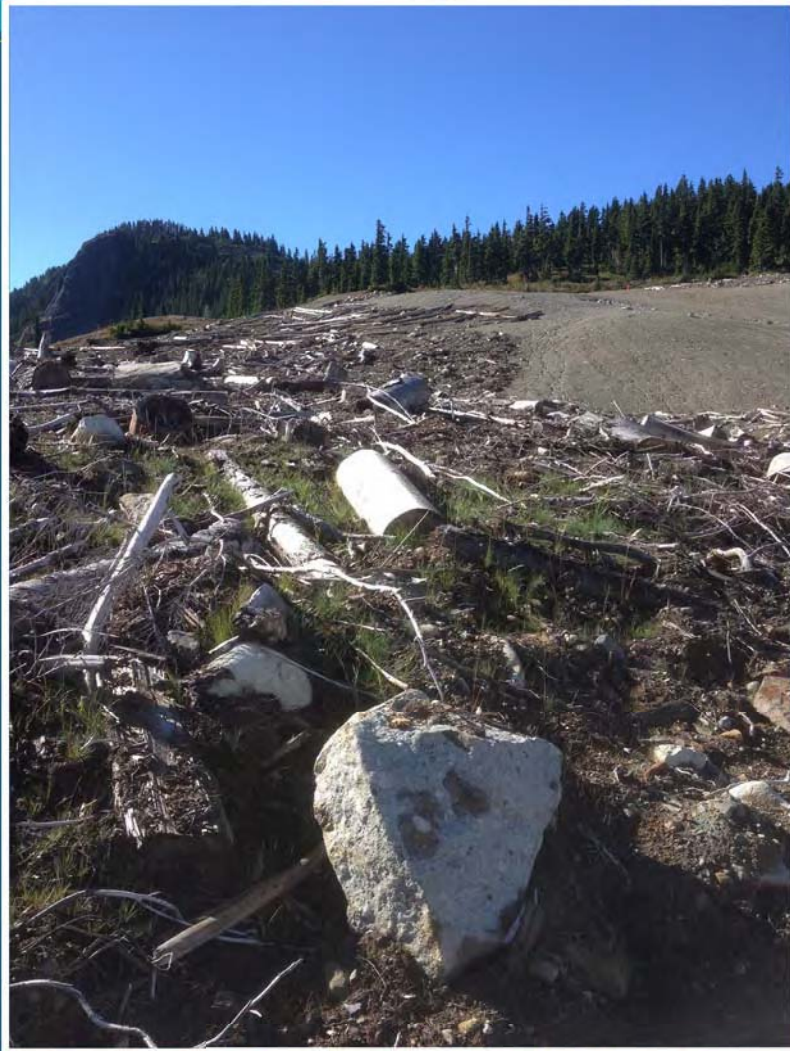
**Ditches used to divert clean water – by late summer 2009, water was flowing over and around the site rather than through it.**

# Mount Washington



**Woody debris for stability and channels to divert water away from the site**

# Mount Washington



Vegetation beginning to establish (photo September, 2012)

# 2011 JAKE MCDONALD ANNUAL RECLAMATION AWARD

Tsolum River Partnership  
for Mount Washington Mine



# 2011 Mine Reclamation Awards

Presented by

The British Columbia Technical and  
Research Committee on Reclamation



36<sup>th</sup> Annual Awards Presentation  
September 20<sup>th</sup>, 2012 – Kamloops, BC