

# 2006 Mine Reclamation Awards

Presented by

The British Columbia Technical and  
Research Committee on Reclamation



31<sup>st</sup> Annual Mine Reclamation Symposium  
September 19, 2007 - Squamish, BC

# 2005 B.C. Mine Reclamation Award

Elk Valley Coal Corporation  
for Fording River Operations

# Fording River Operations

Reforested coal waste at C Spoil



1990



2005

# 2006 Mineral Exploration Citation

Canarc Resource Corp.  
for Polaris Taku



# Polaris Taku

East Side of Airstrip  
Before Reclamation



After Reclamation



# Polaris Taku

Millsite before  
Reclamation



After Reclamation



# Polaris Taku

East Side of Millsite  
Before Reclamation



After Reclamation



# Polaris Taku

## Preparing Drain in Landfill



## Glory Hole Before and After



# 2006 Sand and Gravel Citation

Little Rock Quarries Ltd.  
for Ross Road Gravel Pit

# Ross Road Gravel Pit



Operating Pit – Prior to Reclamation



# Ross Road Gravel Pit



Reclamation in Progress

# Ross Road Gravel Pit



Reclaimed Grazing  
Lands





# 2006 Sand and Gravel Citation

Little Rock Quarries Ltd.  
for Ross Road Gravel Pit

# 2006 Quarry Citation



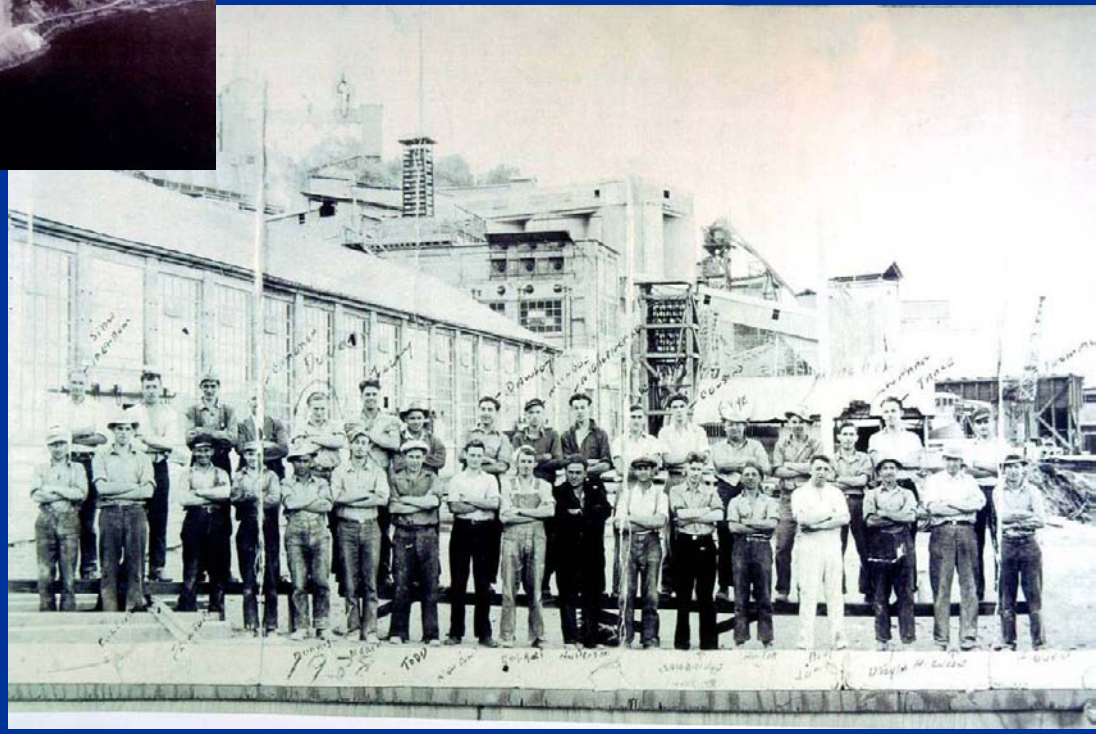
# 2006 Quarry Citation

Three Point Properties  
for Bamberton Quarry

# Bamberton Quarry



## Historic Operations





# Bamberton Quarry



Prior to Reclamation

# Bamberton Quarry



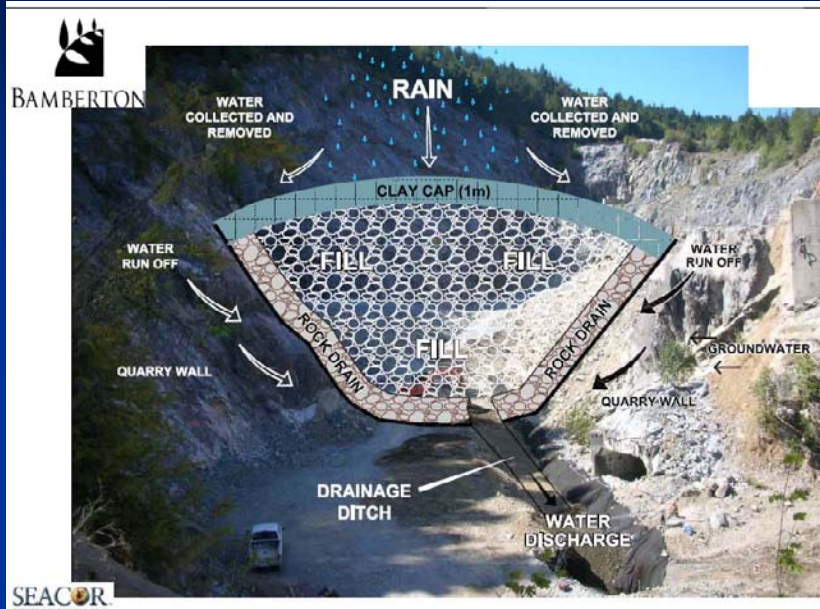
Barge with Steel  
for Recycling

Excavating  
South Landfill





# Bamberton Quarry



Remediation of Contaminated Soils  
In Open Pit





# 2006 Metal Mining (Refining) Citation

Teck Cominco Metals Limited  
for Trail Smelter

# Trail Smelter



Before  
Reclamation of  
Columbia River  
Bank



# Trail Smelter



Spider Hoe  
Recontouring

Cable Lift System





# Trail Smelter



Bioengineering and Live Plantings



# Trail Smelter



Reclamation of Columbia  
River Bank

# 2006 Coal Mining Citation

Elk Valley Coal Corporation  
for Fording River Operations



# Fording River Operations



Restored Henretta Creek Channel



# Fording River Operations



Vegetation Growth  
in Riparian Zone



# Fording River Operations



Productive Fish  
Populations in Restored  
Henretta Creek





# 2006 B.C. Jake McDonald Mine Reclamation Award

BHP Billiton Diamonds Inc.  
for Island Copper Mine

# Island Copper



Reclaimed Waste Rock Dump

# Island Copper



Deer on Reclaimed Waste Rock Dump



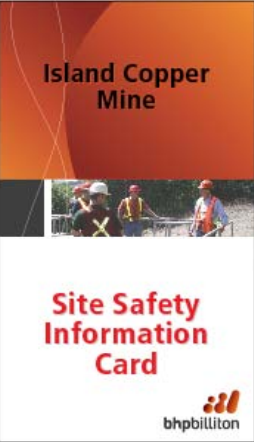
# Island Copper



Increasing  
Biodiversity



# Island Copper



**Island Copper Mine**

**Site Safety Information Card**

bhpbilliton

**The Cardinal Rules**

1. All accidents or injuries must be reported immediately.
2. Proper restraints must be used when working at heights.
3. Entry into a restricted area is not permitted without proper authorization.
4. Lock-out requirements must be followed.
5. Safety protection devices must never be removed, breached or bypassed.
6. When using equipment, operators must have proper authorization and certifications.
7. Lifting equipment must always be used inside its design criteria.
8. Never present yourself or be at work under the influence of alcohol or prohibited drugs.

**ZERO HARM STARTS WITH YOU**

**Fatal Risk Control Protocols**

- Light vehicles
- Surface mobile equipment
- Hazardous materials management
- Equipment safeguarding
- Isolation
- Working at heights
- Lifting operations

**EMERGENCY CONTACTS**

**Port Hardy Bulldozing**  
Office: (250) 949-6548  
Site Cell: (250) 949-1212

**After Hours:**  
Paul Tupper  
(250) 949-2321 (Home)  
(250) 230-2700 (Cell)  
Ron Tupper  
(250) 949-6208 (Home)  
(250) 949-0556 (Cell)

*Report all safety incidents/ injuries to the above*

Prepared by Rescan Environmental Services



## Management Systems and Procedures, including H&S



# Island Copper

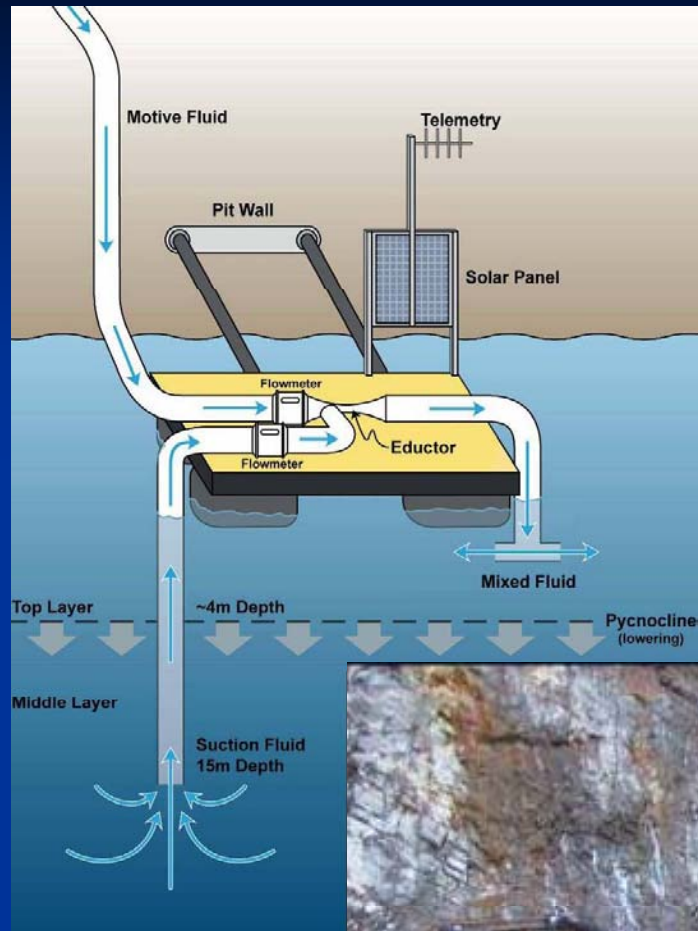


Pit Lake Treatment Research



# Island Copper

## Innovative Middle Layer Lifting System Stabilizes Pit Lake



# Island Copper



Twin Lakes Diversion Project



# Island Copper



## South Dump Seepage Collection Improvements



Installation of sheet pile technology prevents migration of seepage and prevents collection of seawater